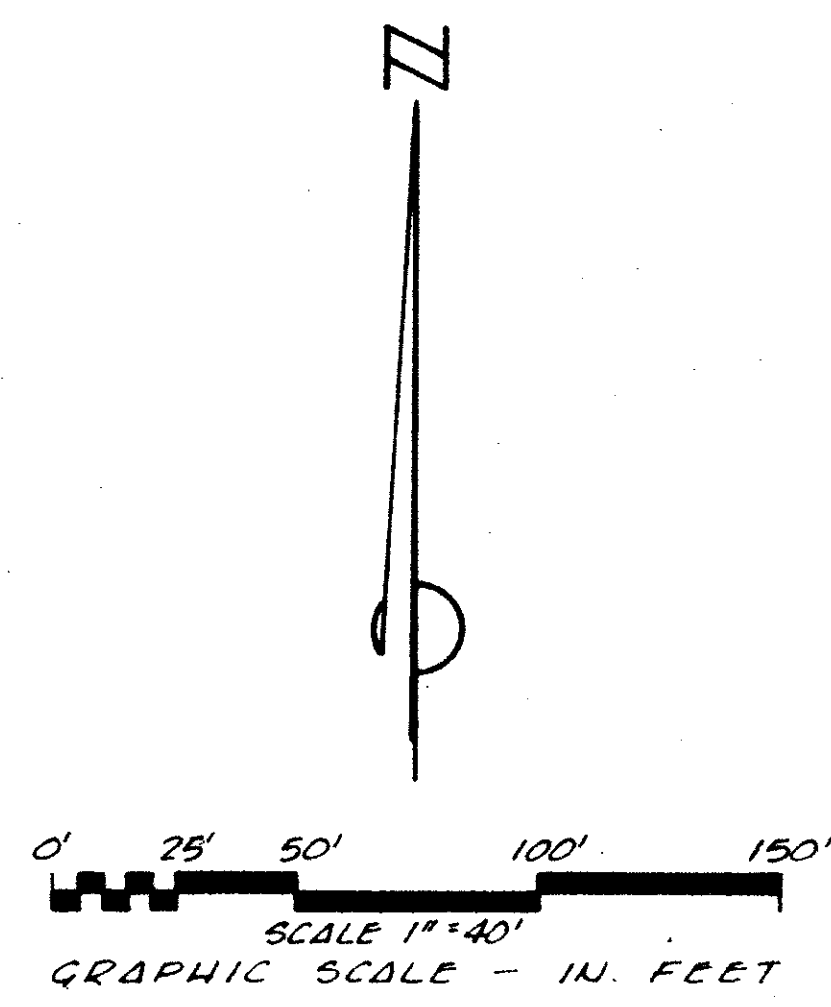
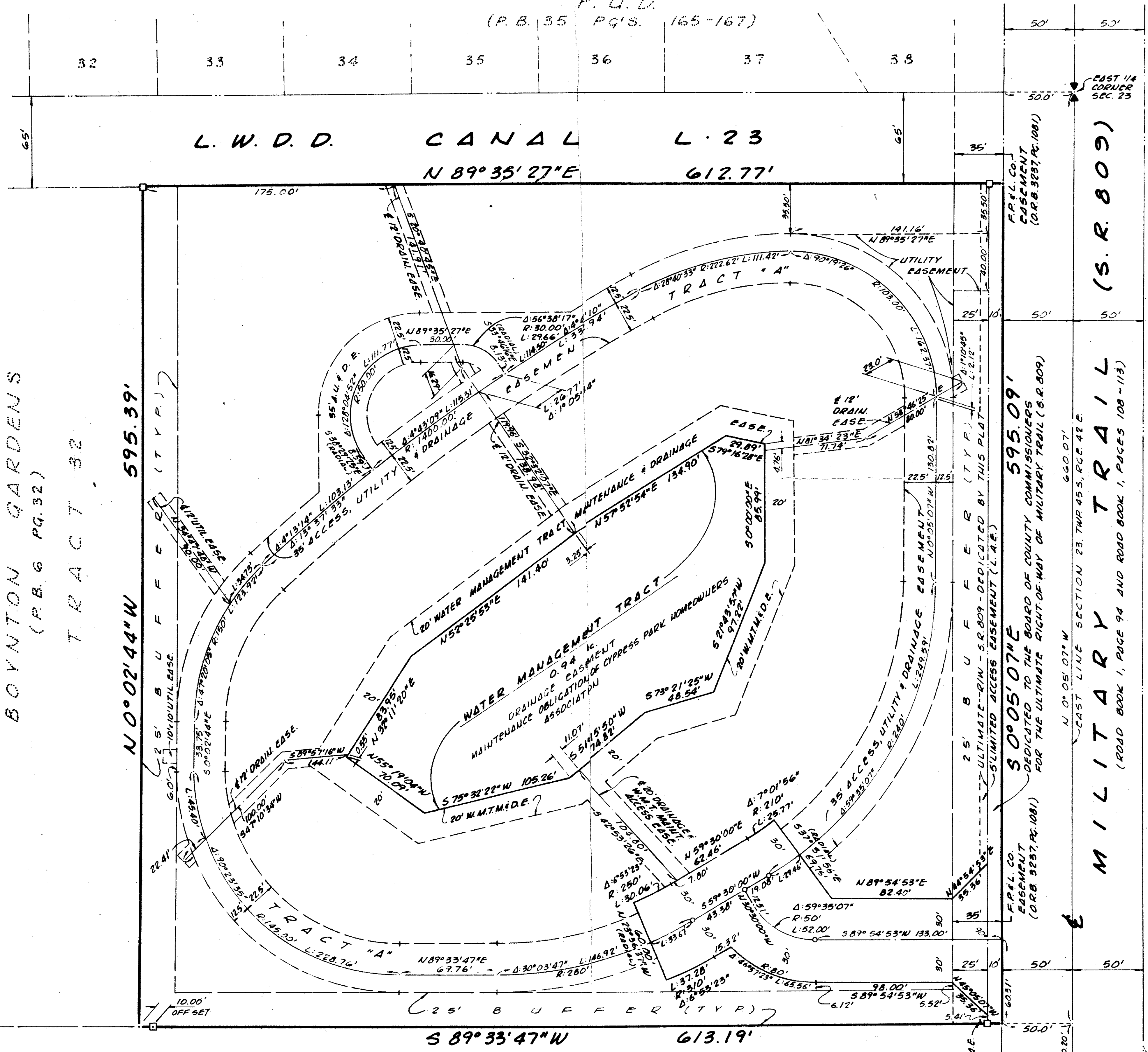


CYPRESS PARK  
A PLANNED UNIT DEVELOPMENT  
PALM BEACH COUNTY, FLORIDA

MIRROR LAKES PLAT ONE  
P.U.D.  
(P.B. 35 P.G.'S. 165-167)



49/95

DRAWING NUMBER

DRAWING NUMBER

DRAWING NUMBER

BOYNTON GARDENS  
(P.B. 6 P.G. 32)

TRACT 32

N 0° 02' 44" W 595.39'

S 89° 33' 47" W 613.19'

VACANT

NEW BOYNTON ROAD (S.R. 804)  
S.E. CORNER SECTION 23,  
TWP. 45 S., RGE. 42 E.

595.09'

S 0° 05' 07" E

595.09'

S 0° 05' 07" E

0423-001

49/95

ADAIR & BRADY, INC. CONSULTING ENGINEERS & LAND SURVEYORS		CYPRESS PARK RECORD PLAT	
Dr. MCH	F.B.	Scale 1" = 40'	SHEET 2
Ch.	P.G.	Date JULY, 1984	FP1285
Ap.		Job No. 115-1	OF 2